

**CHIROBLOC® Large** - ref. CBM

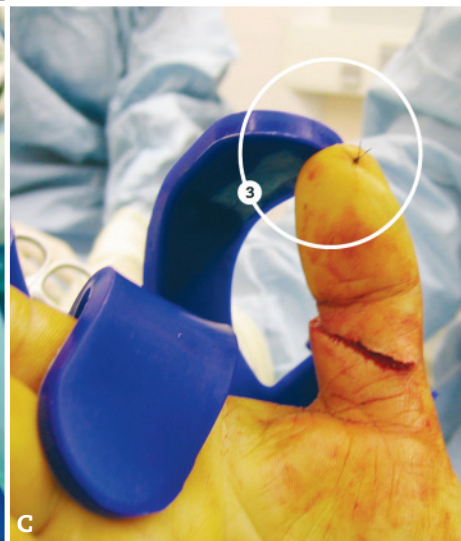
Section of the flexor pollicis longus



A. Please note that wrist, MCP joint and interphalangeal joint are flexed. Thanks to the ballast [1] CHIROBLOC® stands as it is set according to surgeon's wish.

B. CHIROBLOC® "thumb tip" [2] is used to lean against P1 back.

C. CHIROBLOC® "index tip" [3] is used to adjust thumb flexion. Instead of transfixing silicone with a suture, one could have made a loop around CHIROBLOC® "index tip".



Case from Vincent Locquet, MD



Manufacturer:  
AREX®  
BP20  
3 allée du Clos Tonnerre  
F91125 Palaiseau cedex FRANCE

[www.arex.fr](http://www.arex.fr)

**CHIROBLOC® Small** - ref. CBP



CBP with adult hand hold with elastic bands (surgical glove fingers).



CBP with child hand with CHIROBLOC® Ballast (CBL).

**CHIROBLOC® Large and CHIROBLOC® Small**

It is made out of a composite biomaterial. It behaves like a "lead hand" without staining your gloves. CBM: 0.53kg - CBP: 0.3kg

**DO NOT STAIN GLOVES.**

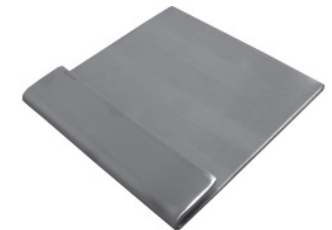
Guaranteed for 1 year.

**CHIROBLOC® Ballast** - ref. CBL

This part may be added if it is desired to make CHIROBLOC® hand heavier.

Ballast weight: 0.725kg

Guaranteed for 5 years.



DISTRIBUTED BY



Manufacturer:  
AREX®  
BP20  
3 allée du Clos Tonnerre  
F91125 Palaiseau cedex FRANCE

[www.arex.fr](http://www.arex.fr)